

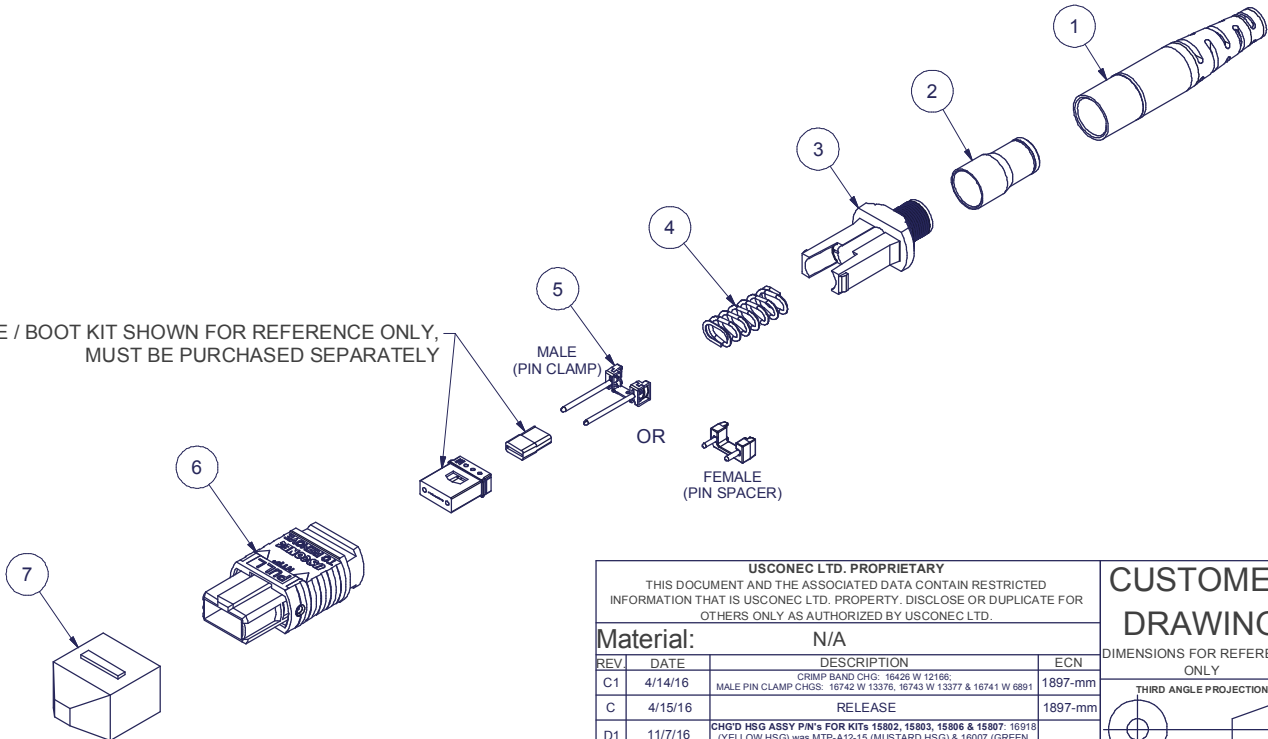
Parts List				
ITEM	DESCRIPTION	PART NUMBER	QTY	NOTES
1	BOOT, ROUND, MTP®, 3.6mm CABLES	12165	1	
2	CRIMP BAND	16426	1	
3	SPRING PUSH	13245	1	
4	SPRING, HFC, 9.8N	14511	1	
5	PIN CLAMP or PIN SPACER	SEE KIT TABLE COLUMN A	1	NOTE 1
6	HOUSING ASSY	SEE KIT TABLE COLUMN B	1	
7	PROTECTIVE CAP, MTP®	MTP-012-01	1	

NOTES:

1. MALE CONNECTOR KIT HAS PIN CLAMP ASSEMBLY,  
FEMALE CONNECTOR KIT HAS FEMALE PIN SPACER

KIT P/N	KIT DESCRIPTION	PERFORMANCE	COLUMN A	COLUMN B	HSG ASSY
			PIN CLAMP / SPACER	HSG ASSY P/N	COLOR
15802	KIT, MTP®, FEMALE, SM, HFC, 3.6mm RND, GREEN	SM or SM MTP Elite®	12918	16007	GREEN
15803	KIT, MTP®, MALE, SM, HFC, 3.6mm RND, GREEN	SM	16742	16007	GREEN
15806	KIT, MTP®, FEMALE, SM MTP Elite®, HFC, 3.6mm RND, YELLOW	SM MTP Elite®	12918	16918	YELLOW
15807	KIT, MTP®, MALE, SM MTP Elite®, HFC, 3.6mm RND, YELLOW	SM MTP Elite®	16743	16918	YELLOW
16903	KIT, MTP®, FEMALE, MM, HFC, 3.6mm RND, AQUA	MM or MM MTP Elite®	12918	7871	AQUA
16904	KIT, MTP®, MALE, MM, HFC, 3.6mm RND, AQUA	MM	16741	7871	AQUA
16905	KIT, MTP®, MALE, MM MTP Elite®, HFC, 3.6mm RND, AQUA	MM MTP Elite®	16742	7871	AQUA
16906	KIT, MTP®, FEMALE, MM, HFC, 3.6mm RND, MAGENTA	MM or MM MTP Elite®	12918	13949	MAGENTA
16907	KIT, MTP®, MALE, MM, HFC, 3.6mm RND, MAGENTA	MM	16741	13949	MAGENTA
16908	KIT, MTP®, MALE, MM MTP Elite®, HFC, 3.6mm RND, MAGENTA	MM MTP Elite®	16742	13949	MAGENTA
16935	KIT, MTP®, FEMALE, MM, HFC, 3.6mm RND, BEIGE	MM	12918	MTP-A12-11	BEIGE
16936	KIT, MTP®, MALE, MM, HFC, 3.6mm RND, BEIGE	MM	16741	MTP-A12-11	BEIGE
16937	KIT, MTP®, FEMALE, MM, HFC, 3.6mm RND, BLACK	MM	12918	MTP-A12-02	BLACK
16938	KIT, MTP®, MALE, MM, HFC, 3.6mm RND, BLACK	MM	16741	MTP-A12-02	BLACK
17090	KIT, MTP®, FEMALE, MM, 3.6mm RND, HEATHER VIOLET	MM or MM MTP Elite®	12918	16693	HEATHER VIOLET
17091	KIT, MTP®, MALE, MM MTP Elite®, 3.6mm RND, HEATHER VIOLET	MM MTP Elite®	16742	16693	HEATHER VIOLET

FERRULE / BOOT KIT SHOWN FOR REFERENCE ONLY,  
MUST BE PURCHASED SEPARATELY



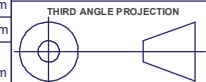
USCONEC LTD. PROPRIETARY  
THIS DOCUMENT AND THE ASSOCIATED DATA CONTAIN RESTRICTED INFORMATION THAT IS USCONEC LTD. PROPERTY. DISCLOSE OR DUPLICATE FOR OTHERS ONLY AS AUTHORIZED BY USCONEC LTD.

Material: N/A

REV	DATE	DESCRIPTION	ECN
C1	4/14/16	CRIMP BAND CHG: 16426 W 12166; MALE PIN CLAMP CHGS: 16742 W 13376, 16743 W 13377 & 16741 W 6891	1897-mm
C	4/15/16	RELEASE	1897-mm
D1	11/7/16	CHG'D HSG ASSY P/N's FOR KITS 15802, 15803, 15806 & 15807: 16918 (YELLOW HSG) was MTP-A12-15 (MUSTARD HSG) & 16007 (GREEN HSG) was MTP-A12-12 (GREEN HSG); UPDATED TITLE FORMAT	1965-mm
D	11/22/16	RELEASE	

CUSTOMER DRAWING

DIMENSIONS FOR REFERENCE ONLY



METRIC/mm

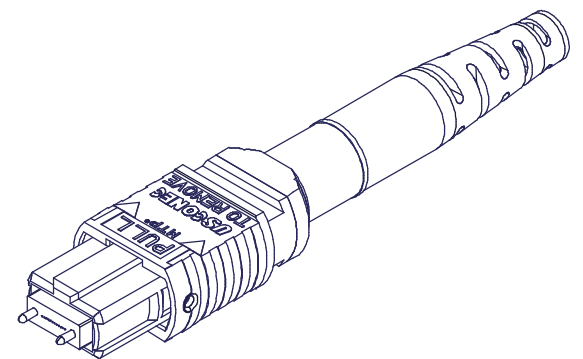
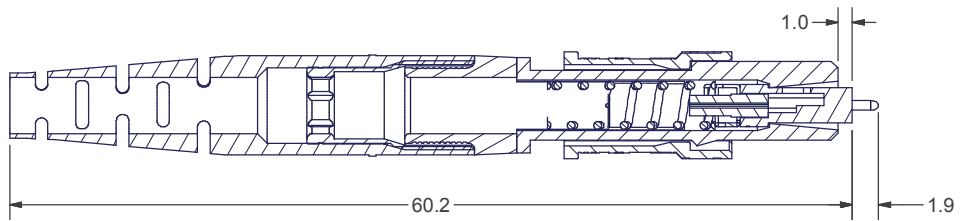
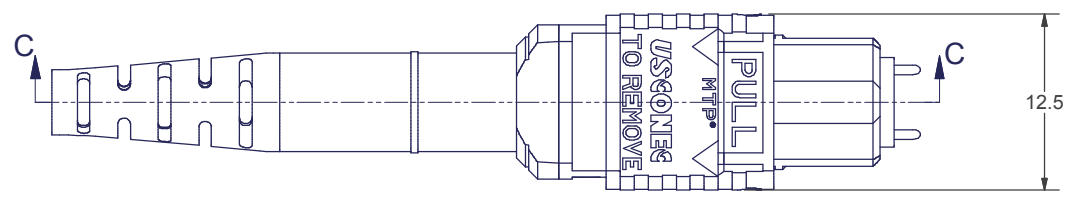
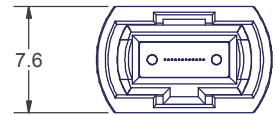
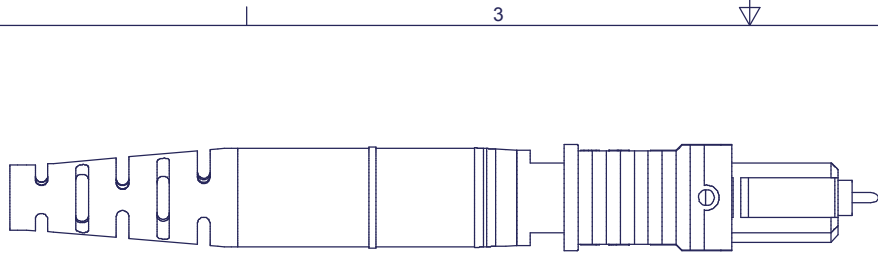
▲ DENOTES CRITICAL DIMENSION

**USCONEC** Hickory, NC  
800-769-0944  
www.usconec.com

TITLE  
KIT, MTP® CONN., 3.4 - 3.8mm RND CBL, HFC

SIZE S&M Part No.: SEE TABLE DWG NO. **C15802** REV D

SCALE N.T.S. Drafter M.McCROSKY Date: 2/18/2014 SHEET 1 OF 2



SECTION C-C

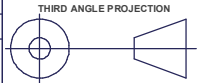
USCONEC LTD. PROPRIETARY  
 THIS DOCUMENT AND THE ASSOCIATED DATA CONTAIN RESTRICTED  
 INFORMATION THAT IS USCONEC LTD. PROPERTY. DISCLOSE OR DUPLICATE FOR  
 OTHERS ONLY AS AUTHORIZED BY USCONEC LTD.

Material: N/A

REV	DATE	DESCRIPTION	ECN
		SEE SHEET 1	

CUSTOMER  
DRAWING

DIMENSIONS FOR REFERENCE  
ONLY



METRIC/mm



Hickory, NC  
800-769-0944  
[www.usconec.com](http://www.usconec.com)

TITLE  
KIT, MTP® CONN., 3.4 - 3.8mm RND CBL,  
HFC

SIZE <b>B</b>	S&M Part No.: SEE SHEET 1	DWG NO. <b>C15802</b>	REV D
------------------	------------------------------	--------------------------	----------

SCALE N.T.S.	Drafter M.McCROSKEY	Date: 2/18/2014	SHEET 2 OF 2
-----------------	------------------------	--------------------	--------------

▲ DENOTES CRITICAL DIMENSION