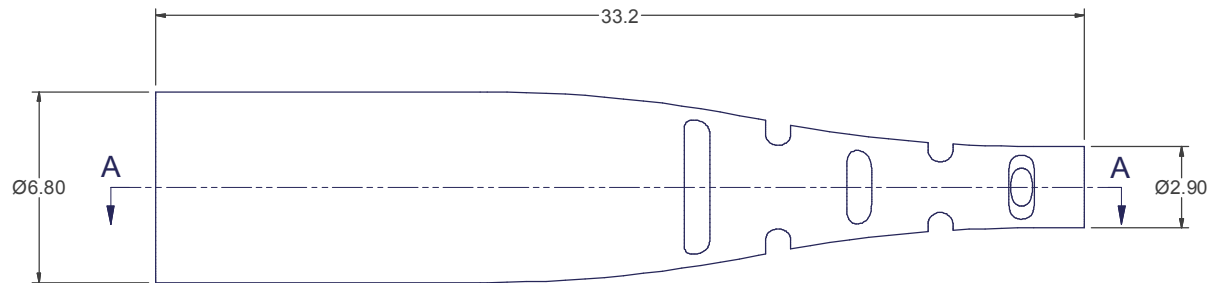
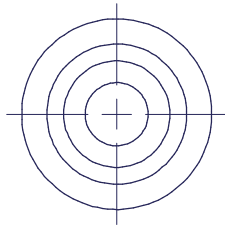


SECTION A-A



PART NO.	COLOR
14922	BLACK
15893	AQUA
15894	GREEN
16570	DK GRAY
17085	RED
17153	LT GRAY
16689	MAGENTA
17326	YELLOW
18026	HEATHER VIOLET
18027	MUNSELL VIOLET

USCONEC LTD. PROPRIETARY
THIS DOCUMENT AND THE ASSOCIATED DATA CONTAIN RESTRICTED INFORMATION THAT IS USCONEC LTD. PROPERTY. DISCLOSE OR DUPLICATE FOR OTHERS ONLY AS AUTHORIZED BY USCONEC LTD.

Material: TPE / MAT'L SPEC #C13480

REV	DATE	DESCRIPTION	ECN
F	11/11/15	RELEASE	1851-mm
G1	1/4/16	ADDED P/N 17326 (YELLOW BOOT) TO TABLE	1873-mm
G	1/6/16	RELEASE	1873-mm
H	1/4/17	ADD'D P/N's 18026 (HEATHER VIOLET) & 18027 (MUNSELL VIOLET) TO TABLE	2005-mm
	1/27/17	DEL'D TANGENT EDGES OF RADII FOR CLARITY... NO PART CHG	my

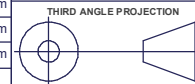
CUSTOMER DRAWING



Hickory, NC
800-769-0944
www.usconec.com

DIMENSIONS FOR REFERENCE ONLY

TITLE
BOOT, 2.0 mm ROUND
CABLE, MTP®



METRIC/mm

SIZE	S&M Part No.:	DWG NO.	REV
B	SEE TABLE	C14922	H
SCALE	Drafter	Date:	SHEET
N.T.S.	G. WOLF	10/9/2012	1 OF 1

▲ DENOTES CRITICAL DIMENSION