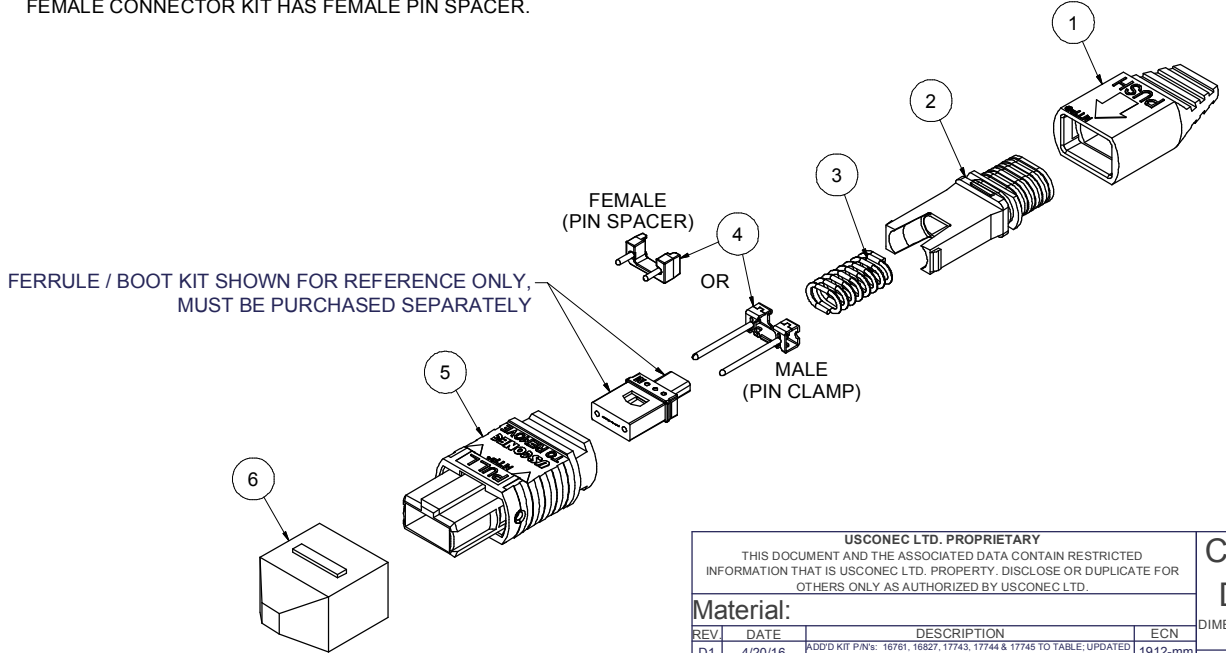


Parts List				KIT P/N		KIT DESCRIPTION		PERFORMANCE	COLUMN A	COLUMN B	COLUMN C	HSG ASSY COLOR
ITEM	DESCRIPTION	PART NUMBER	QTY	NOTES					PIN CLAMP/SPACER P/N	HSG ASSY P/N	SPRING P/N	
1	BOOT, STRAIN RELIEF, RIBBON, MTP®	5350	1	-	14224	KIT, MTP®, MALE, MM MTP Elite®, UNJACKETED RIBBON, HSF, AQUA	MM MTP Elite®	16742	7871	12501	AQUA	
					14225	KIT, MTP®, FEMALE, MM, UNJACKETED RIBBON, HSF, BEIGE	MM	12918	MTP-A12-11	12501	BEIGE	
					14226	KIT, MTP®, MALE, MM, UNJACKETED RIBBON, HSF, BEIGE	MM	16741	MTP-A12-11	12501	BEIGE	
					14227	KIT, MTP®, FEMALE, MM, UNJACKETED RIBBON, HSF, BLACK	MM	12918	MTP-A12-02	12501	BLACK	
2	SPRING PUSH	5551	1	-	14228	KIT, MTP®, MALE, MM, UNJACKETED RIBBON, HSF, BLACK	MM	16741	MTP-A12-02	12501	BLACK	
					14229	KIT, MTP®, FEMALE, MM, UNJACKETED RIBBON, HSF, AQUA	MM or MM MTP Elite®	12918	7871	12501	AQUA	
3	SPRING	SEE KIT TABLE COLUMN C	1	-	14230	KIT, MTP®, MALE, MM, UNJACKETED RIBBON, HSF, AQUA	MM	16741	7871	12501	AQUA	
4	PIN CLAMP or PIN SPACER	SEE KIT TABLE COLUMN A	1	NOTE 1	16761	KIT, MTP®, MALE, MM, UNJACKETED RIBBON, HSF, MAGENTA	MM	16741	13949	12501	MAGENTA	
					16827	KIT, MTP®, MALE, MM MTP Elite®, UNJACKETED RIBBON, HSF, MAGENTA	MM MTP Elite®	16742	13949	12501	MAGENTA	
					17743	KIT, MTP®, FEMALE, MM, UNJACKETED RIBBON, HSF, MAGENTA	MM or MM MTP Elite®	12918	13949	12501	MAGENTA	
					17744	KIT, MTP®, MALE, MM, UNJACKETED RIBBON, HSF, MAGENTA	MM	16741	13949	12501	MAGENTA	
5	HOUSING ASSY	SEE KIT TABLE COLUMN B	1	-	17745	KIT, MTP®, MALE, MM MTP Elite®, UNJACKETED RIBBON, HSF, MAGENTA	MM MTP Elite®	16742	13949	12501	MAGENTA	
					18155	KIT, MTP®, FEMALE, SM, UNJACKETED RIBBON, HSF, GREEN	SM or SM MTP Elite®	12918	16007	17881	GREEN	
					18156	KIT, MTP®, MALE, SM, UNJACKETED RIBBON, HSF, GREEN	SM	16742	16007	17881	GREEN	
					18157	KIT, MTP®, FEMALE, SM MTP Elite®, UNJACKETED RIBBON, HSF, YELLOW	SM MTP Elite®	12918	16918	17881	YELLOW	
6	PROTECTIVE CAP	MTP-012-01	1	-	18158	KIT, MTP®, MALE, SM MTP Elite®, UNJACKETED RIBBON, HSF, YELLOW	SM MTP Elite®	16743	16918	17881	YELLOW	

NOTES:
 1. MALE CONNECTOR KIT HAS PIN CLAMP ASSEMBLY.
 FEMALE CONNECTOR KIT HAS FEMALE PIN SPACER.



FERRULE / BOOT KIT SHOWN FOR REFERENCE ONLY, MUST BE PURCHASED SEPARATELY

USCONEC LTD. PROPRIETARY
 THIS DOCUMENT AND THE ASSOCIATED DATA CONTAIN RESTRICTED INFORMATION THAT IS USCONEC LTD. PROPERTY. DISCLOSE OR DUPLICATE FOR OTHERS ONLY AS AUTHORIZED BY USCONEC LTD.

Material:

REV	DATE	DESCRIPTION	ECN
D1	4/20/16	ADD'D KIT P/N's: 16761, 16827, 17743, 17744 & 17745 TO TABLE; UPDATED TABLE FORMAT; MALE PIN CLAMP CHG'D: 16742 W 13376 & 16741 W 6891	1912-mm
D	5/5/16	RELEASE	1912-mm
E1	8/2/16	ADD'D KIT P/N's 18155, 18156, 18157 & 18158 TO TABLE; CHG'D SPRING P/N: 17881 was 12501	1967-mm
	11/29/16	ADD'D COLUMN C TO KIT TABLE; CHG'D SPRING P/N FOR MM KITS: 12501 was 17881	1967-mm
E	12/15/16	RELEASE	

CUSTOMER DRAWING

USCONEC
 Hickory, NC
 800-769-0944
 www.usconec.com

TITLE
 KIT, MTP® CONNECTOR, UNJACKETED RIBBON, HIGH SPRING FORCE

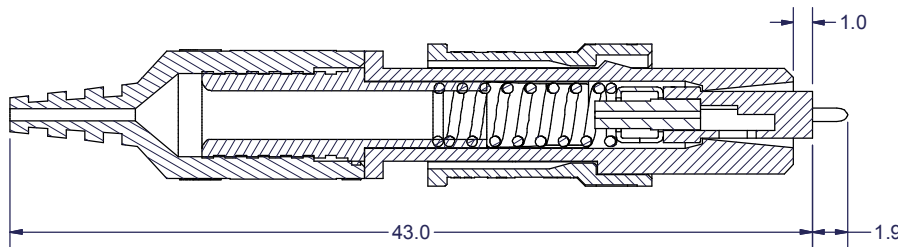
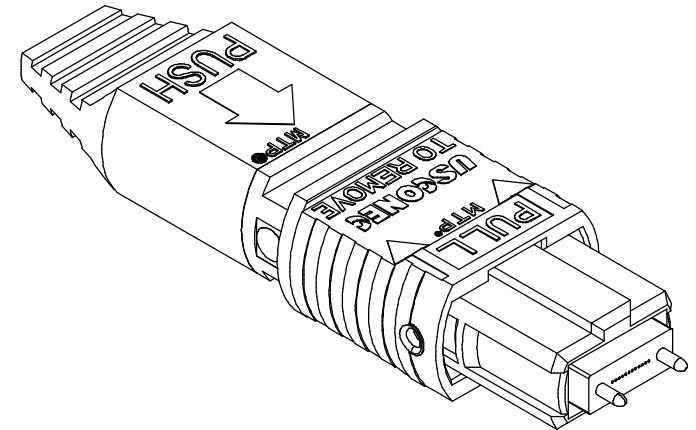
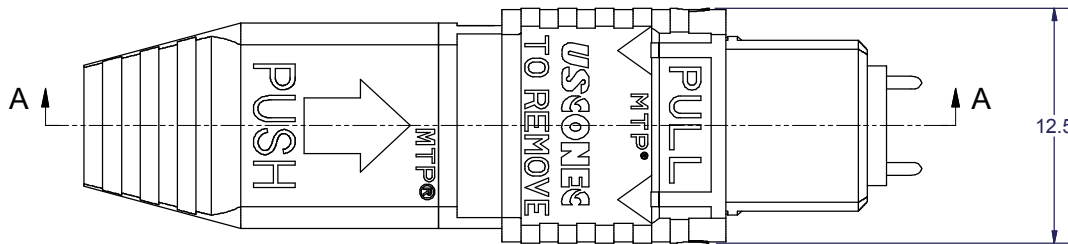
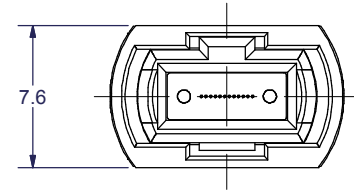
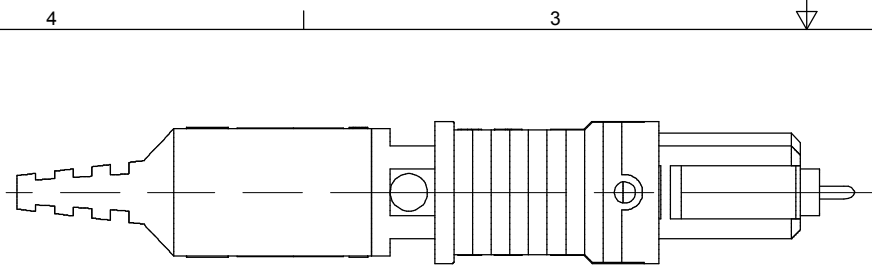
▲ DENOTES CRITICAL DIMENSION

THIRD ANGLE PROJECTION

SCALE: METRIC/mm

SIZE: S&M Part No.: SEE TABLE
 DWG NO: C14223
 REV: E

SCALE: N.T.S.
 Drafter: G. WOLF
 Date: 12/15/2011
 SHEET 1 OF 2



SECTION A-A

USCONEC LTD. PROPRIETARY
 THIS DOCUMENT AND THE ASSOCIATED DATA CONTAIN RESTRICTED INFORMATION THAT IS USCONEC LTD. PROPERTY. DISCLOSE OR DUPLICATE FOR OTHERS ONLY AS AUTHORIZED BY USCONEC LTD.

Material:

REV	DATE	DESCRIPTION	ECN
		SEE SHEET 1	

CUSTOMER DRAWING

DIMENSIONS FOR REFERENCE ONLY

THIRD ANGLE PROJECTION



METRIC/mm



▲ DENOTES CRITICAL DIMENSION

Hickory, NC
 800-769-0944
www.usconec.com

TITLE
 KIT, MTP® CONNECTOR, UNJACKETED RIBBON, HIGH SPRING FORCE

SIZE	S&M Part No.:	DWG NO.	REV
B	SEE TABLE	C14223	E
SCALE	Drafter	Date:	SHEET
N.T.S.	G. WOLF	12/15/2011	2 OF 2