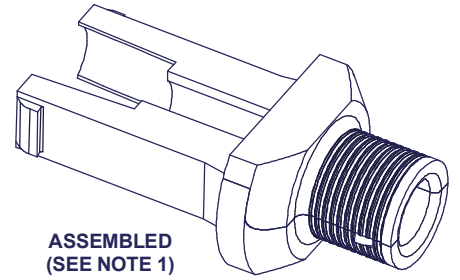
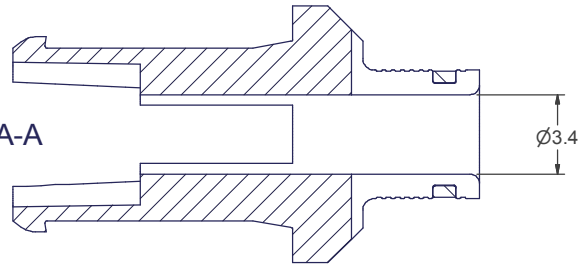
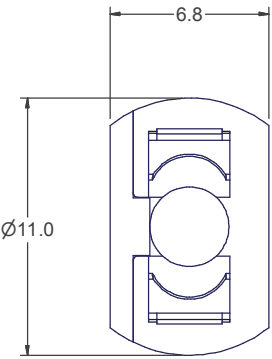
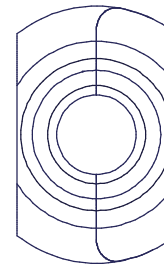
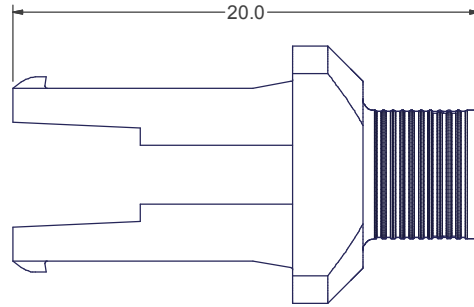
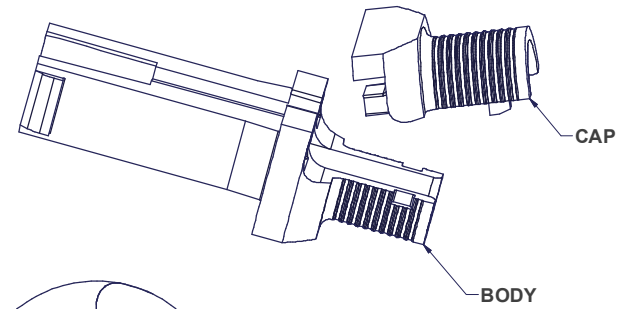
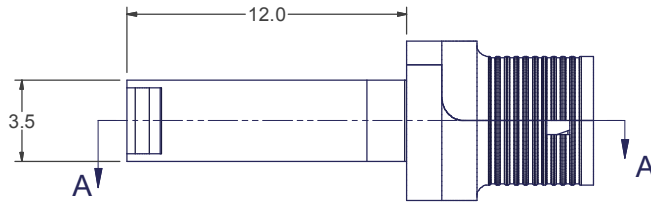


SECTION A-A



ASSEMBLED  
(SEE NOTE 1)



NOTES:

1. BODY & CAP ARE PACKAGED SEPARATELY.
2. MATERIAL: PEI - MAT'L SPEC #C12540  
COLOR: BLACK

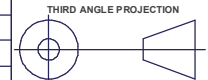
**USCONEC LTD. PROPRIETARY**  
THIS DOCUMENT AND THE ASSOCIATED DATA CONTAIN RESTRICTED INFORMATION THAT IS USCONEC LTD. PROPERTY. DISCLOSE OR DUPLICATE FOR OTHERS ONLY AS AUTHORIZED BY USCONEC LTD.

**Material:** SEE NOTES

REV	DATE	DESCRIPTION	ECN
X3	4/14/11	-	01303
A	6/9/11	INITIAL RELEASE	01303

**CUSTOMER DRAWING**

DIMENSIONS FOR REFERENCE ONLY



**METRIC/mm**

**USCONEC** Hickory, NC  
800-769-0944  
[www.usconec.com](http://www.usconec.com)

**TITLE**  
SPRING PUSH, 2 PIECE,  
ROUND, MTP®, LARGE OD

SIZE	S&M Part No.:	DWG NO.	REV
B	13030	<b>C13030</b>	A
SCALE	Drafter	Date:	SHEET
N.T.S.	Hiep Nguyen	8/17/2010	1 OF 1

▲ DENOTES CRITICAL DIMENSION