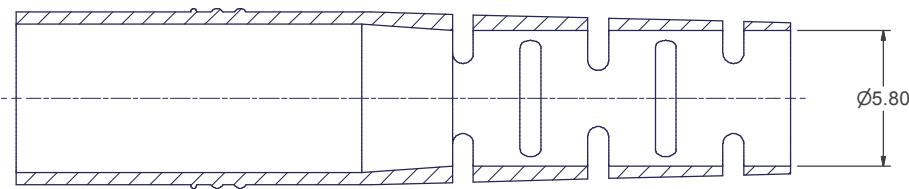
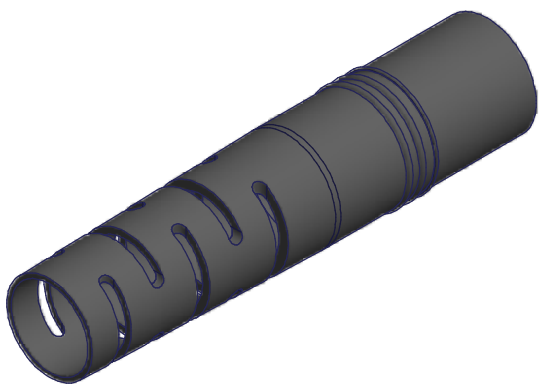
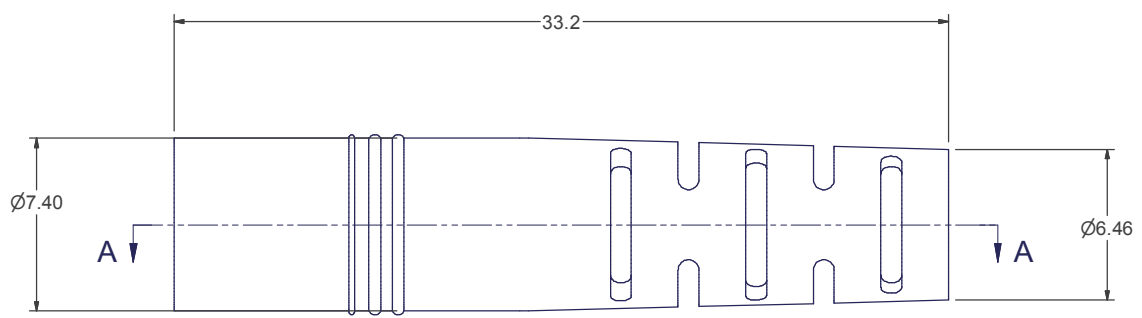
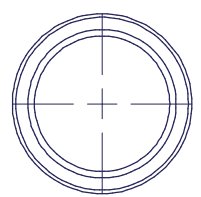


8 7 6 5 4 3 2 1



SECTION A-A



P/N	DESCRIPTION
12978	BLACK
15147	YELLOW
15565	AQUA
18401	MUNSELL VIOLET

**USCONEC LTD. PROPRIETARY**  
THIS DOCUMENT AND THE ASSOCIATED DATA CONTAIN RESTRICTED INFORMATION THAT IS USCONEC LTD. PROPERTY. DISCLOSE OR DUPLICATE FOR OTHERS ONLY AS AUTHORIZED BY USCONEC LTD.

**Material:** TPE - MAT'L SPEC #C13710

REV	DATE	DESCRIPTION	ECN
B	3/5/13	RELEASE	01539
C1	9/11/13	ADD'D PN 15565 (AQUA) & 15566 (VIOLET) OPTIONS	01642
C	10/2/13	RELEASE	01642
D1	12/1/16	REMOVED FROM TABLE: P/N 15566 (VIOLET); ADDED TO TABLE: P/N 18401 (MUNSELL VIOLET)	2005-mm
D	1/4/17	RELEASE	

▲ DENOTES CRITICAL DIMENSION

**CUSTOMER DRAWING**

**USCONEC** Hickory, NC  
800-769-0944  
www.usconec.com

**TITLE**  
BOOT, ROUND, MTP®,  
5.0/5.5 mm CABLE

**Material:** TPE - MAT'L SPEC #C13710

**THIRD ANGLE PROJECTION**

**METRIC/mm**

SIZE	S&M Part No.:	DWG NO.	REV
B	SEE TABLE	<b>C12978</b>	D
SCALE	Drafter	Date:	SHEET
N.T.S.	Hiep Nguyen	8/17/2010	1 OF 1

8 7 6 5 4 3 2 1