

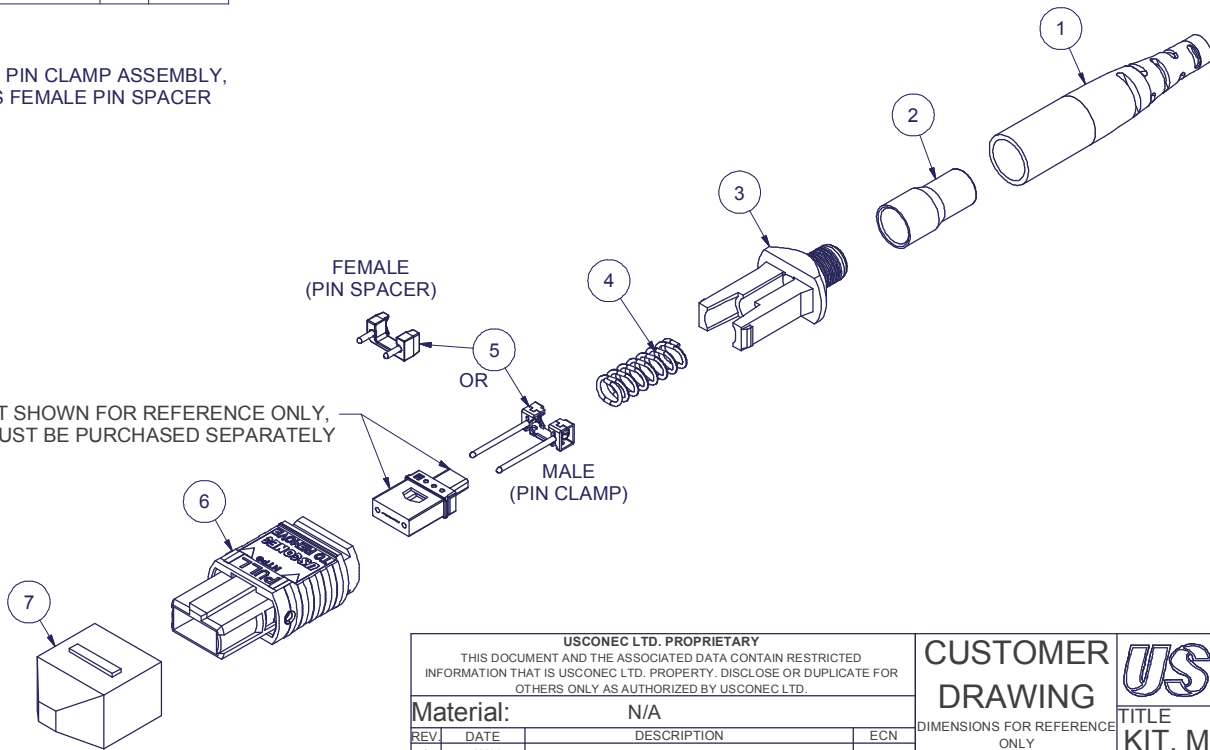
Parts List				
ITEM	DESCRIPTION	PART NUMBER	QTY	NOTES
1	BOOT, RND	12543	1	-
2	CRIMP BAND	12805	1	-
3	SPRING PUSH	12804	1	-
4	SPRING	MTP-A12-03	1	-
5	PIN CLAMP or PIN SPACER	SEE KIT TABLE COLUMN A	1	NOTE 1
6	HOUSING ASSY	SEE KIT TABLE COLUMN B	1	-
7	PROTECTIVE CAP	9888	1	-

KIT P/N	KIT DESCRIPTION	PERFORMANCE	COLUMN A		COLUMN B	
			PIN CLAMP / SPACER P/N	HSG ASSY P/N	HSG ASSY COLOR	
12324	KIT, MTP®, FEMALE, SM MTP Elite®, 3.0mm RND, UNC. ENV., GREEN	SM MTP Elite®	9386	18323	GREEN	
12325	KIT, MTP®, MALE, SM MTP Elite®, 3.0mm RND, UNC. ENV., GREEN	SM MTP Elite®	12880	18323	GREEN	
13187	KIT, MTP®, FEMALE, MM MTP Elite®, 3.0mm RND, UNC. ENV., AQUA	MM MTP Elite®	9386	13007	AQUA	
13188	KIT, MTP®, MALE, MM MTP Elite®, 3.0mm RND, UNC. ENV., AQUA	MM MTP Elite®	13625	13007	AQUA	
15756	KIT, MTP®, MALE, SM, 3.0mm RND, UNC. ENV., GREEN	SM	13625	18323	GREEN	

NOTES:

1. MALE CONNECTOR KIT HAS PIN CLAMP ASSEMBLY,
FEMALE CONNECTOR KIT HAS FEMALE PIN SPACER

FERRULE / BOOT KIT SHOWN FOR REFERENCE ONLY,
MUST BE PURCHASED SEPARATELY



USCONEC LTD. PROPRIETARY
THIS DOCUMENT AND THE ASSOCIATED DATA CONTAIN RESTRICTED
INFORMATION THAT IS USCONEC LTD. PROPERTY. DISCLOSE OR DUPLICATE FOR
OTHERS ONLY AS AUTHORIZED BY USCONEC LTD.

Material: N/A

REV	DATE	DESCRIPTION	ECN
A	4/1/11	INITIAL RELEASE	01123
B1	1/30/14	ADDED KIT P/N 15756	1671-my
B	4/23/14	RELEASE	1671-mm
C1	4/3/17	UPDATED DWG FORMAT; RENUMBERED CALL-OUTS & ITEM NO.'s; SORTED KIT P/N'S NUMERICALLY; CORRECTED HSG P/N: 18323 W 12601	2056-mm
C	4/12/17	RELEASE	

CUSTOMER DRAWING

DIMENSIONS FOR REFERENCE ONLY

THIRD ANGLE PROJECTION

METRIC/mm

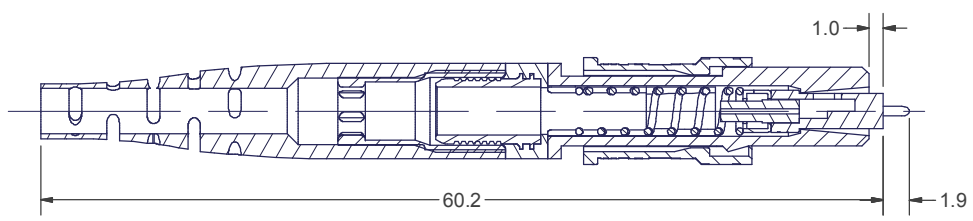
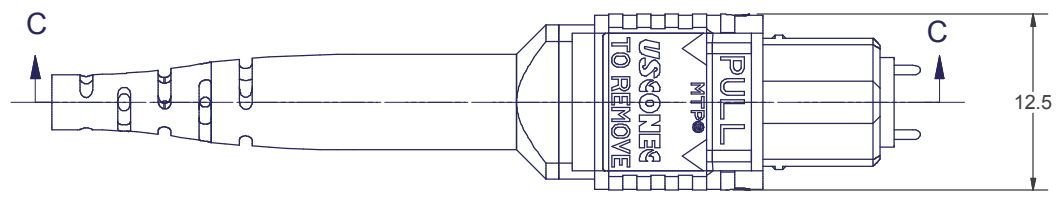
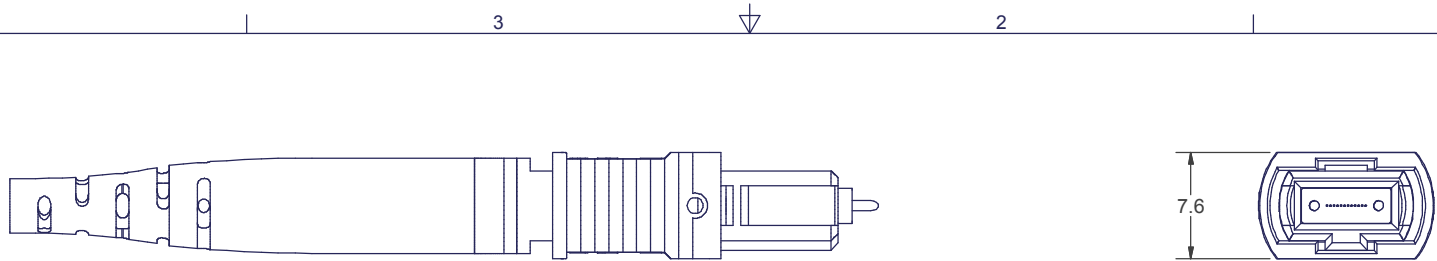
▲ DENOTES CRITICAL DIMENSION

USCONEC Hickory, NC
800-769-0944
www.usconec.com

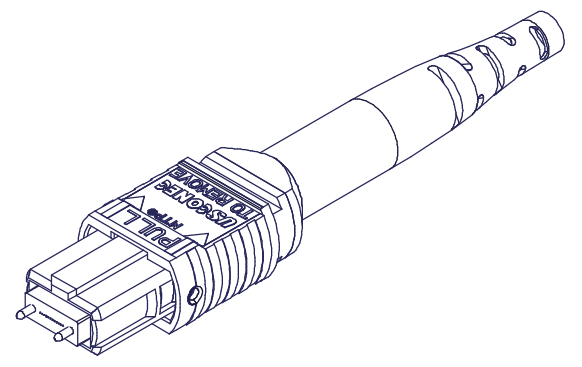
TITLE
KIT, MTP® CONN., 2.8 - 3.2mm RND
CBL, UNC. ENV.

SIZE	S&M Part No.:	DWG NO.	REV
B	SEE TABLE	C12324	C
SCALE	Drafter	Date:	
N.T.S.	B. HENLEY	3/12/2009	

SHEET 1 OF 2



SECTION C-C



USCONEC LTD. PROPRIETARY
THIS DOCUMENT AND THE ASSOCIATED DATA CONTAIN RESTRICTED INFORMATION THAT IS USCONEC LTD. PROPERTY. DISCLOSE OR DUPLICATE FOR OTHERS ONLY AS AUTHORIZED BY USCONEC LTD.

Material: N/A

REV	DATE	DESCRIPTION	ECN
		SEE SHEET 1	

CUSTOMER DRAWING

DIMENSIONS FOR REFERENCE ONLY

THIRD ANGLE PROJECTION

METRIC/mm

▲ DENOTES CRITICAL DIMENSION

USCONEC
Hickory, NC
800-769-0944
www.usconec.com

TITLE
KIT, MTP® CONN., 2.8 - 3.2mm RND CBL, UNC. ENV.

SIZE B	S&M Part No.: SEE SHEET 1	DWG NO. C12324	REV C
SCALE N.T.S.	Drafter B. HENLEY	Date: 3/12/2009	SHEET 2 OF 2