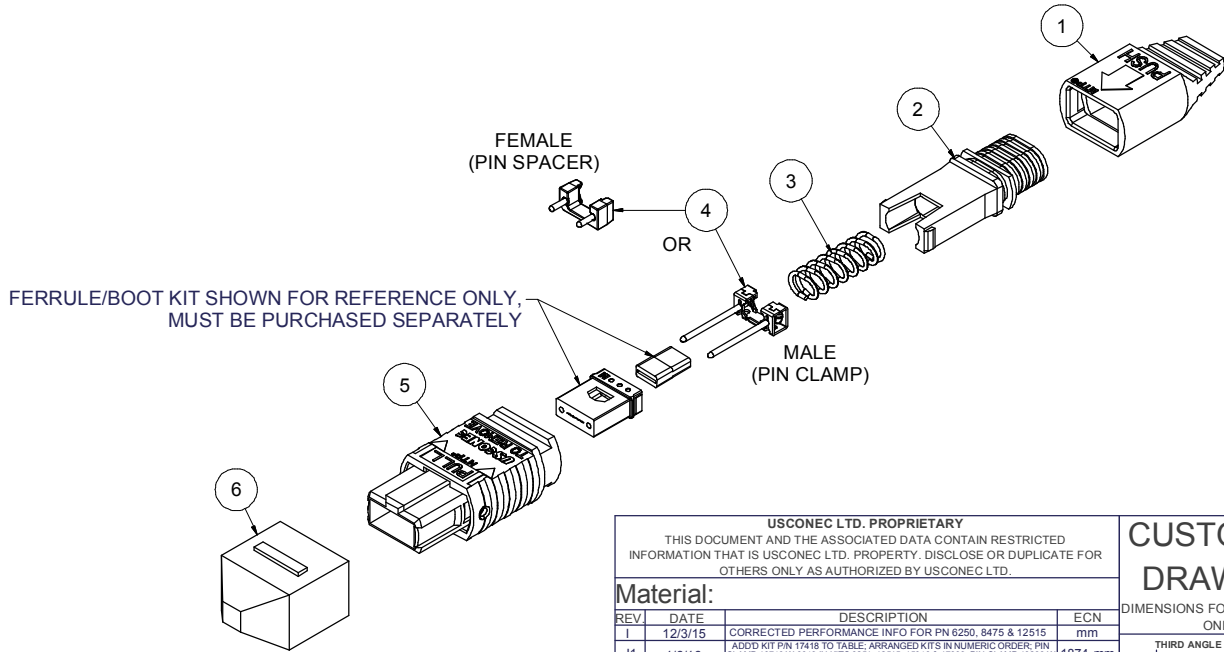


Parts List				
ITEM	DESCRIPTION	PART NUMBER	QTY	NOTES
1	BOOT	5350	1	-
2	SPRING PUSH	6106	1	-
3	SPRING	MTP-A12-03	1	-
4	PIN CLAMP or PIN SPACER	SEE KIT TABLE COLUMN A	1	NOTE 1
5	HOUSING ASSY	SEE KIT TABLE COLUMN B	1	-
6	DUST CAP	MTP-012-01	1	-

KIT P/N	KIT DESCRIPTION	PERFORMANCE	COLUMN A		COLUMN B	
			PIN CLAMP/SPACER P/N	HSG ASSY P/N	HSG ASSY COLOR	
6239	KIT, MTP®, FEMALE, MM, UNJACKETED RIBBON, BEIGE	MM	9386	MTP-A12-11	BEIGE	
6240	KIT, MTP®, MALE, MM, UNJACKETED RIBBON, BEIGE	MM	16739	MTP-A12-11	BEIGE	
6250	KIT, MTP®, FEMALE, SM, UNJACKETED RIBBON, GREEN	SM or SM MTP Elite®	9386	16007	GREEN	
6251	KIT, MTP®, MALE, SM, UNJACKETED RIBBON, GREEN	SM	16740	16007	GREEN	
6259	KIT, MTP®, FEMALE, SM MTP Elite®, UNJACKETED RIBBON, YELLOW	SM MTP Elite®	9386	16918	YELLOW	
6260	KIT, MTP®, MALE, SM MTP Elite®, UNJACKETED RIBBON, YELLOW	SM MTP Elite®	16238	16918	YELLOW	
6267	KIT, MTP®, FEMALE, MM, UNJACKETED RIBBON, BLACK	MM	9386	MTP-A12-02	BLACK	
6268	KIT, MTP®, MALE, MM, UNJACKETED RIBBON, BLACK	MM	16739	MTP-A12-02	BLACK	
8475	KIT, MTP®, FEMALE, MM, UNJACKETED RIBBON, AQUA	MM or MM MTP Elite®	9386	7871	AQUA	
8476	KIT, MTP®, MALE, MM, UNJACKETED RIBBON, AQUA	MM	16739	7871	AQUA	
12515	KIT, MTP®, MALE, MM MTP Elite®, UNJACKETED RIBBON, AQUA	MM MTP Elite®	16740	7871	AQUA	
14599	KIT, MTP®, MALE, MM, UNJACKETED RIBBON, MAGENTA	MM	16739	13949	MAGENTA	
15046	KIT, MTP®, MALE, MM MTP Elite®, UNJACKETED RIBBON, MAGENTA	MM MTP Elite®	16740	13949	MAGENTA	
15231	KIT, MTP®, FEMALE, MM, UNJACKETED RIBBON, MAGENTA	MM or MM MTP Elite®	9386	13949	MAGENTA	
17092	KIT, MTP®, FEMALE, MM, UNJACKETED RIBBON, HEATHER VIOLET	MM or MM MTP Elite®	9386	16693	HEATHER VIOLET	
17093	KIT, MTP®, MALE, MM MTP Elite®, UNJACKETED RIBBON, HEATHER VIOLET	MM MTP Elite®	16740	16693	HEATHER VIOLET	
17418	KIT, MTP®, MALE, SM MTP Elite®, UNJACKETED RIBBON, GREEN	SM MTP Elite®	16238	16007	GREEN	

NOTES:
 1. MALE CONNECTOR KIT HAS PIN CLAMP ASSEMBLY.
 FEMALE CONNECTOR KIT HAS FEMALE PIN SPACER.



USCONEC LTD. PROPRIETARY
 THIS DOCUMENT AND THE ASSOCIATED DATA CONTAIN RESTRICTED INFORMATION THAT IS USCONEC LTD. PROPERTY. DISCLOSE OR DUPLICATE FOR OTHERS ONLY AS AUTHORIZED BY USCONEC LTD.

Material:

REV	DATE	DESCRIPTION	ECN
I	12/3/15	CORRECTED PERFORMANCE INFO FOR PN 6250, 8475 & 12515	mm
J1	1/6/16	ADD KIT P/N 17418 TO TABLE; ARRANGED KITS IN NUMERIC ORDER; PIN CLAMP 16740 W/ 6043 IN KITS 6251, 12515, 15046 & 17093; PIN CLAMP 16238 W/ 6044 IN KIT 6250; PIN CLAMP 16739 W/ 6042 IN KITS 6260, 6266, 8475 & 14599	1874-mm
J	2/23/16	RELEASE	1874-mm
K1	11/29/16	HSG ASSY CHG'S: 16918 (YELLOW) was MTP-A12-15 (MUSTARD); 16007 (GREEN) was MTP-A12-12 (GREEN)	1967-mm
K	12/15/16	RELEASE	

▲ DENOTES CRITICAL DIMENSION

CUSTOMER DRAWING

USCONEC Hickory, NC
800-769-0944
www.usconec.com

TITLE
KIT, MTP® CONNECTOR, UNJACKETED RIBBON

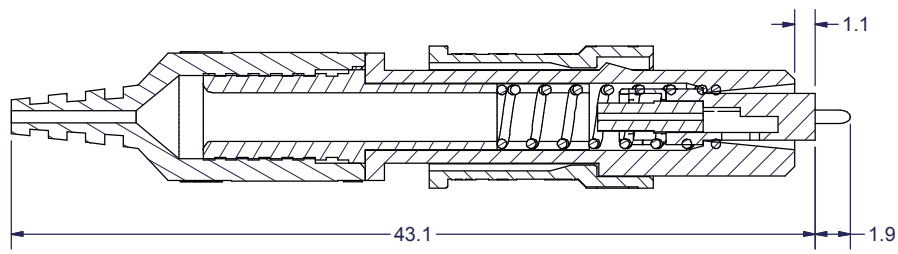
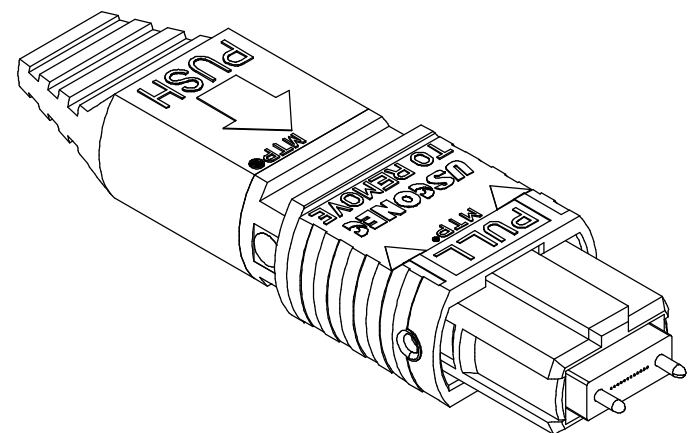
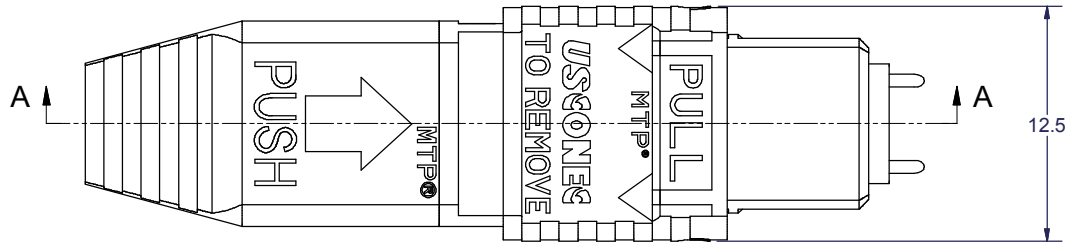
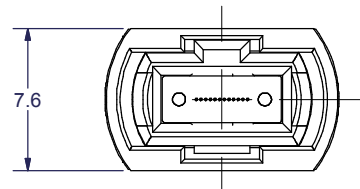
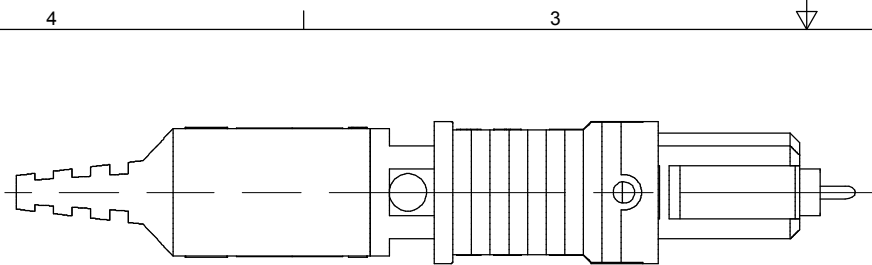
SIZE S&M Part No.:
B SEE TABLE

SCALE N.T.S. Drafter F. COPE Date: 7/16/2002 SHEET 1 OF 2

REV K
 DWG NO. **C10821**

METRIC/mm

THIRD ANGLE PROJECTION



SECTION A-A

USCONEC LTD. PROPRIETARY
 THIS DOCUMENT AND THE ASSOCIATED DATA CONTAIN RESTRICTED INFORMATION THAT IS USCONEC LTD. PROPERTY. DISCLOSE OR DUPLICATE FOR OTHERS ONLY AS AUTHORIZED BY USCONEC LTD.

Material:

REV	DATE	DESCRIPTION	ECN
		SEE SHEET 1	

CUSTOMER DRAWING
 DIMENSIONS FOR REFERENCE ONLY
 THIRD ANGLE PROJECTION

METRIC/mm

▲ DENOTES CRITICAL DIMENSION

USCONEC Hickory, NC
 800-769-0944
www.usconec.com

TITLE
KIT, MTP® CONNECTOR, UNJACKETED RIBBON

SIZE B	S&M Part No.: SEE TABLE	DWG NO. C10821	REV K
SCALE N.T.S.	Drafter F. COPE	Date 7/16/2002	SHEET 2 OF 2