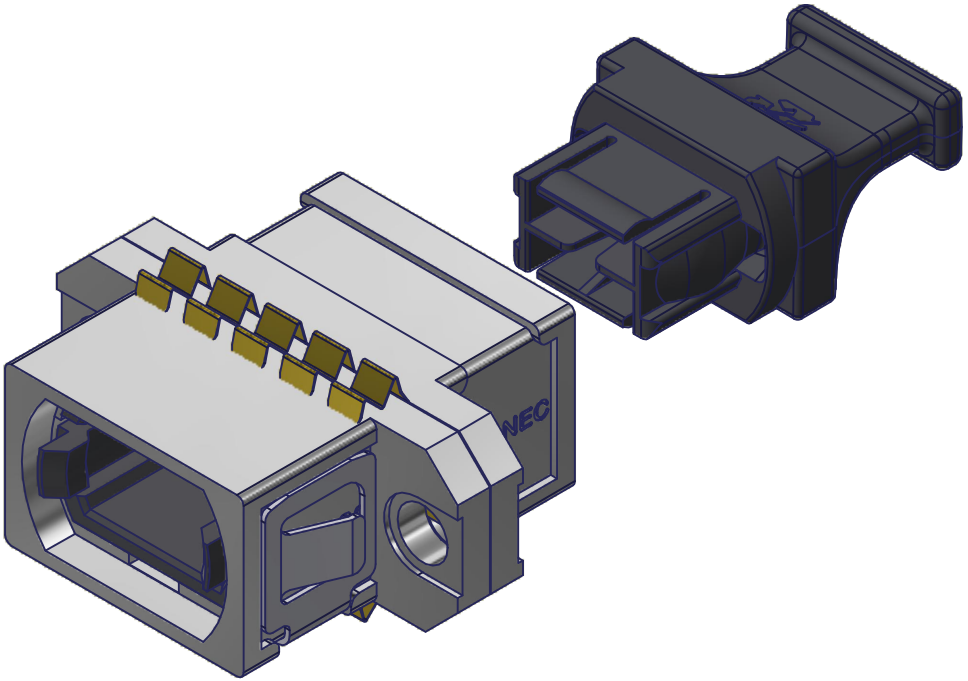
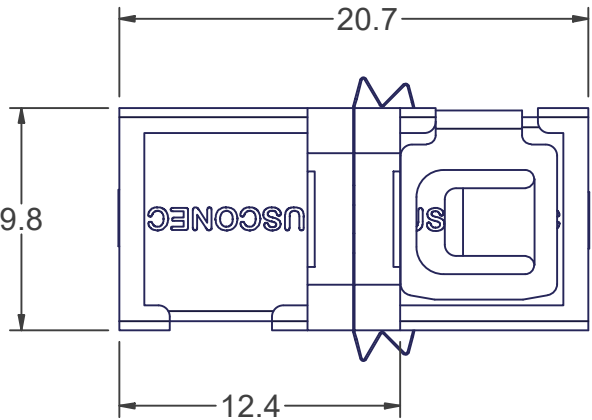
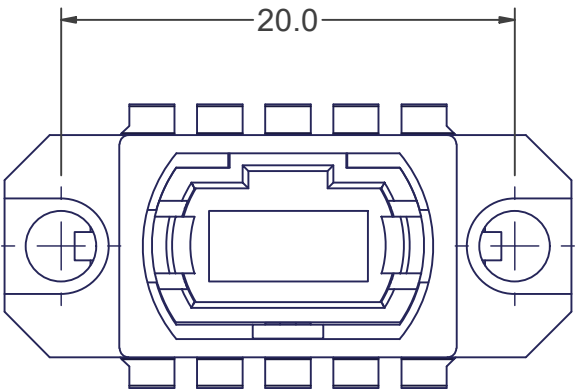
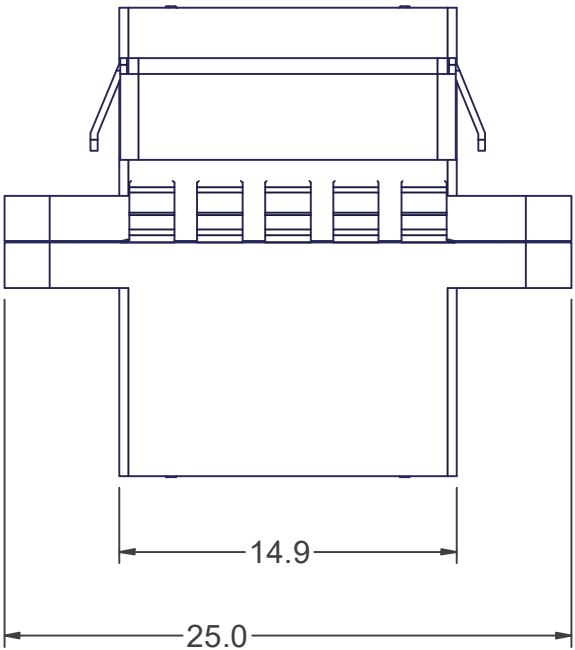


P/N	DESCRIPTION
5702	OPPOSED KEY
15089	ALIGNED KEY



PART	MATERIAL
ADAPTER BODY	THERMOPLASTIC, STAINLESS STEEL COATED
EMI GASKET	BERYLLIUM COPPER, TIN PLATED
SPRING CLIP	STAINLESS STEEL
DUST PLUG	POLYCARBONATE


USCONEC LTD. PROPRIETARY			
THIS DOCUMENT AND THE ASSOCIATED DATA CONTAIN RESTRICTED INFORMATION THAT IS USCONEC LTD. PROPERTY. DISCLOSE OR DUPLICATE FOR OTHERS ONLY AS AUTHORIZED BY USCONEC LTD.			
Material:		SEE TABLE AT LEFT	
REV.	DATE	DESCRIPTION	ECN
D	6/29/09	CHANGED MATERIAL IN NOTE 2	01163
E	1/11/10	REVISED MOUNTING CUTOUT	01197
F1	11/16/12	ADDED ALIGNED KEY VERSION P/N 15089; REMOVED WHITE MARKS	01525
F	1/17/13	RELEASE	
G	11/29/22	UPDATED ASSY W/ IMPROVED DUST PLUG; MOVED PANEL CUTOUT INFO TO T.N.	2527-mm

CUSTOMER
DRAWING

DIMENSIONS FOR REFERENCE
ONLY

THIRD ANGLE PROJECTION

METRIC/mm



Hickory, NC
800-769-0944
www.usconec.com

TITLE
ADAPTER, MTP®, FULL FLANGE,
EMI "M" SHIELD, W/O SHUTTER

SIZE
B

S&M Part No.:
SEE TABLE

DWG NO.
C10783

REV
G

SCALE
N.T.S.

Drafter
F. COPE

Date:
5/3/2002

SHEET 1 OF 1