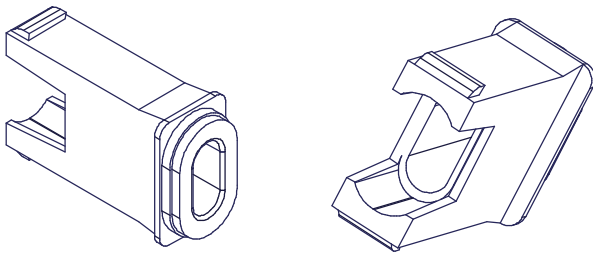


SECTION A-A

SECTION B-B



USCONEC LTD. PROPRIETARY
 THIS DOCUMENT AND THE ASSOCIATED DATA CONTAIN RESTRICTED INFORMATION THAT IS USCONEC LTD. PROPERTY. DISCLOSE OR DUPLICATE FOR OTHERS ONLY AS AUTHORIZED BY USCONEC LTD.

Material: PEI - MAT'L SPEC #C12540, BLACK

REV	DATE	DESCRIPTION	ECN
A	5/20/02	RELEASED TO SALES	00302
B	8/16/02	REVISED CORE PER ENHANCED SPR. PUSH 10773	00338
C	10/24/02	13.85 +0.00/-0.10 WAS 14.1±0.3, (0.7) WAS (0.9), REM 2.6, 5.95 DIM, 3.50, 0.20, 0.50 AND 1.2±0.3, 0.15 ALL AROUND WAS 2 PLC	00357
E	3/26/03	REDESIGNED AND UPDATED	00364

CUSTOMER DRAWING

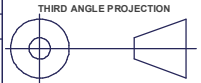
▲ DENOTES CRITICAL DIMENSION

Hickory, NC
800-769-0944
www.usconec.com

USCONEC

DIMENSIONS FOR REFERENCE ONLY

TITLE **Spring Push, Short, MTP®**



SIZE	S&M Part No.:	DWG NO.	REV
B	5697	C10681	E
SCALE	Drafter	Date:	SHEET
N.T.S.	Matt Brown	5/15/2002	1 OF 1

METRIC/mm