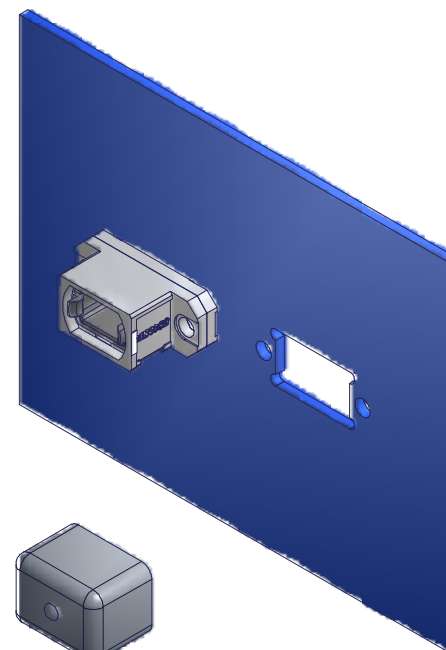
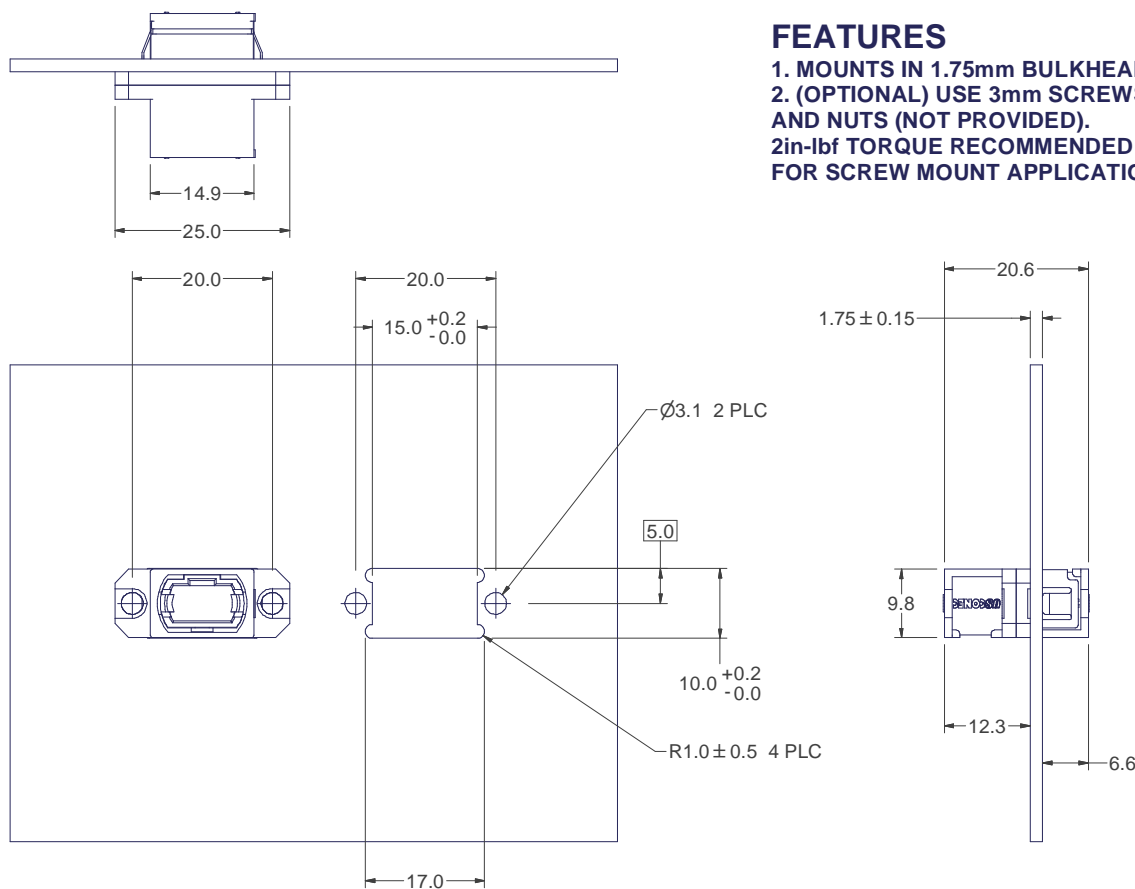


FEATURES

- 1. MOUNTS IN 1.75mm BULKHEAD
- 2. (OPTIONAL) USE 3mm SCREWS AND NUTS (NOT PROVIDED).
2in-lbf TORQUE RECOMMENDED FOR SCREW MOUNT APPLICATIONS.



ADAPTER SUPPLIED WITH ONE OR TWO DUST CAPS (SEE CHART)



▲ DENOTES CRITICAL DIMENSION.

PART NO. W/ (1) DUST CAP	PART NO. W/ (2) DUST CAPS	COLOR
MTP-ADPT-6496	MTP-ADPT-2-9131	BLACK
7868	9132	BEIGE
7869	9133	GREEN
7870	9134	AQUA
6531	9135	MUSTARD
		BLUE

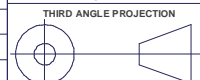
Material: N/A

REV.	DATE	DESCRIPTION	ECN
B	10/12/01	ADDED CORNER RELIEF TO ADPT PANEL OPNG	00169
C	5/21/02	REVISED VIEWS TO SHOW MARKING	00282
D	3/19/03	ADDED CHART AND PART NO. 6496	00411
E	5/16/05	ADDED P/N's 7868-7870 TO CHART	00679
F	10/28/05	ADDED P/N 6531 TO CHART	00730
G	5/2/07	ADDED (2) DUST CAP VERSIONS	00918
H	10/10/07	ADDED TORQUE SPEC TO FEATURE 2	00963

CUSTOMER DRAWING

US CONEC Hickory, NC
800-769-0944
www.usconec.com

TITLE ASSY, MTP STANDARD ADAPTER, 1.75 mm WALL



SIZE	S&M Part No.:	DWG NO.	REV
B	SEE CHART	C10408	H

SCALE	Drafter	Date:	SHEET	OF
N.T.S.	F. COPE	12/1/2000	1	1

METRIC/mm